


Electronic Hook Switch for Alcatel-Lucent Enterprise

Alcatel-Lucent Enterprise



DESK PHONE MODELS
 4029
 4039
 IP Touch 4028
 IP Touch 4038
 IP Touch 4068

EHS Cable



APA-23™*
 PN: 38908-11

*APA-23™ replaces APA-20 and APA-22™

Plantronics Audio Solutions



SAVI 700 SERIES
 Wireless headset system manages PC, mobile and desk phone calls



CS500/CS500 XD SERIES
 Wireless headsets manage desk phone calls



MDA200
 Enables USB connectivity to the desk phone to manage both PC and desk phone calls



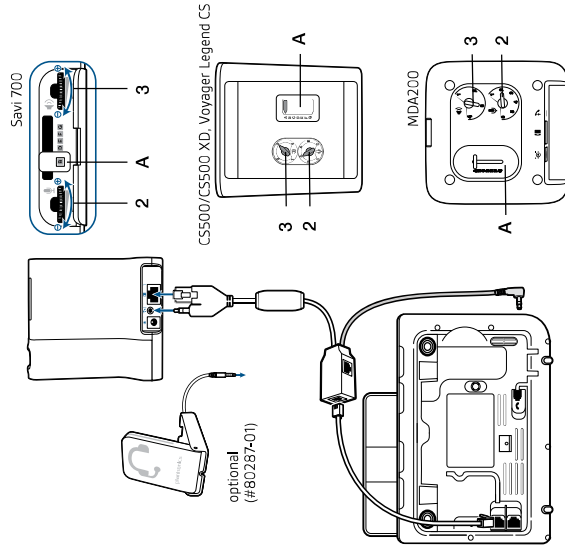
VOYAGER LEGEND CS
 Wireless Bluetooth® headset system manages desk phone and mobile calls

EHS Setup

Use the EHS setup below to automatically answer a desk phone call by pressing a button on your Savi 700 Series or CS500 Series headset or MDA200 or Voyager Legend CS.

ALCATEL-LUCENT ENTERPRISE MODELS: IP TOUCH 4028, 4038, 4068

SETUP



ALCATEL-LUCENT ENTERPRISE MODELS: 4029, 4039
 (Note: Voyager Legend CS Mobile connectivity is not possible with these particular phones)

SETUP

CONFIGURATION

